

For additional recommendations for laboratory testing in adult transgender individuals receiving gender-affirming hormone therapy, including preventive care screening, see [Endocrine Testing in Transgender Adults](#) on ARUP Consult.

INDICATIONS FOR TESTING
Individual receiving gender-affirming hormone therapy

Which type of therapy is the individual receiving?

Testosterone hormone therapy

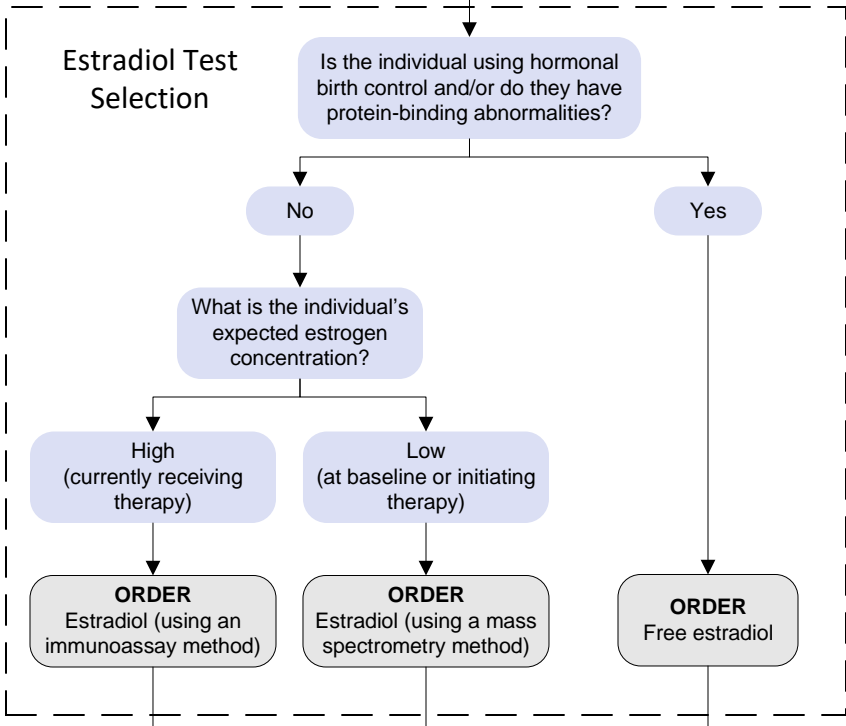
Estrogen hormone therapy and/or testosterone-suppressing hormone therapy

What is the individual's expected testosterone concentration?

ORDER
Testosterone (using a mass spectrometry method)
AND
Use the algorithm in the dashed box below to select an estradiol test

High (currently receiving therapy)

Low (at baseline or initiating therapy)



ORDER
Testosterone (using an immunoassay method)

ORDER
Testosterone (using a mass spectrometry method)

Refer to guidelines^a or [Endocrine Testing in Transgender Adults](#) on ARUP Consult for interpretation of results

A free or bioavailable testosterone test may provide supportive information, particularly in individuals with protein-binding abnormalities
Refer to the [Free or Bioavailable Testosterone Test Options \(Adult Males or Individuals on Testosterone Hormone Therapy\)](#) table

Refer to guidelines^a or [Endocrine Testing in Transgender Adults](#) on ARUP Consult for interpretation of results

A free or bioavailable testosterone test may provide supportive information, particularly in individuals with protein-binding abnormalities
Refer to the [Free or Bioavailable Testosterone Test Options \(Adult Females, Children, or Individuals on Testosterone-Suppressing Hormone Therapy\)](#) table

^aGuidelines for monitoring gender-affirming hormone therapy include:

- Hembree WC, Cohen-Kettenis PT, Gooren L, et al. [Endocrine treatment of gender-dysphoric/gender-incongruent persons: an Endocrine Society clinical practice guideline](#) [published corrections appear in *J Clin Endocrinol Metab.* 2018;103(2):699, and *J Clin Endocrinol Metab.* 2018;103(7):2758-2759]. *J Clin Endocrinol Metab.* 2017;102(11):3869-3903.
- Deutsch MB, ed. [Guidelines for the primary and gender-affirming care of transgender and gender nonbinary people](#). 2nd ed. University of California, San Francisco, Transgender Care. [Published: Jun 2016; Accessed: Nov 2021]