

# Infertility Testing for the Female Reproductive Partner

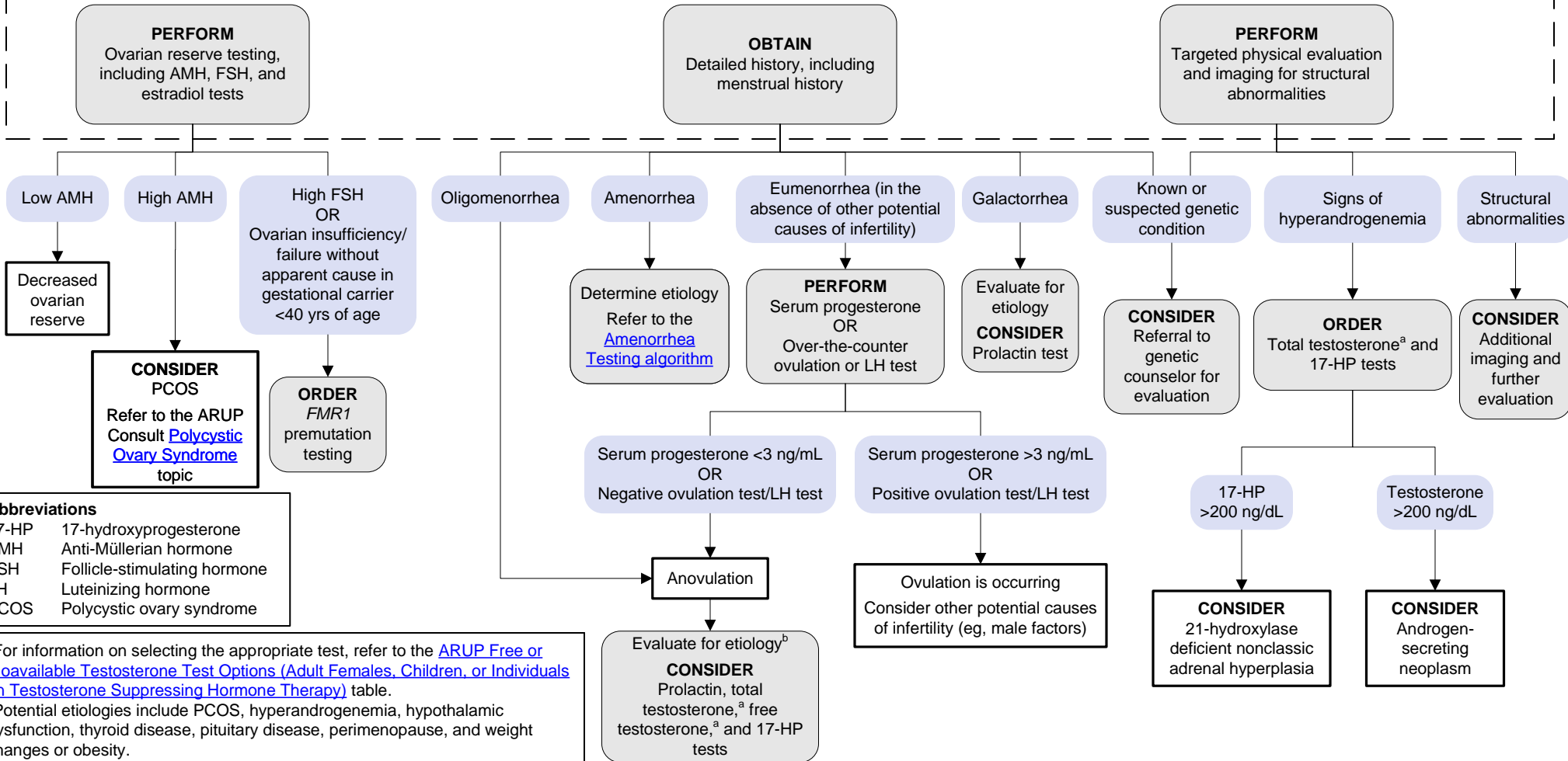
[Click here for topics associated with this algorithm](#)

**INDICATIONS FOR TESTING**  
 Female and male reproductive partners unable to achieve pregnancy:  
 Within 12 mos if female partner <35 yrs of age  
 Within 6 mos if female partner 35-40 yrs of age  
 Within <6 mos if female partner ≥ 40 yrs of age

A concurrent evaluation of the male reproductive partner is recommended; refer to the [Infertility Testing for the Male Reproductive Partner](#) algorithm

Testing should be accompanied by evaluation for [thyroid disease](#) and [sexually transmitted infections](#)

Perform all of the following:



**Abbreviations**  
 17-HP 17-hydroxyprogesterone  
 AMH Anti-Müllerian hormone  
 FSH Follicle-stimulating hormone  
 LH Luteinizing hormone  
 PCOS Polycystic ovary syndrome

<sup>a</sup>For information on selecting the appropriate test, refer to the [ARUP Free or Bioavailable Testosterone Test Options \(Adult Females, Children, or Individuals on Testosterone Suppressing Hormone Therapy\)](#) table.

<sup>b</sup>Potential etiologies include PCOS, hyperandrogenemia, hypothalamic dysfunction, thyroid disease, pituitary disease, perimenopause, and weight changes or obesity.

**References**

[Infertility workup for the women's health specialist: ACOG committee opinion, Number 781. Obstet Gynecol. 2019;133\(6\):e377-e384.](#)  
 Practice Committee of the American Society for Reproductive Medicine. [Fertility evaluation of infertile women: a committee opinion. Fertil Steril. 2021;116\(5\):1255-1265.](#)