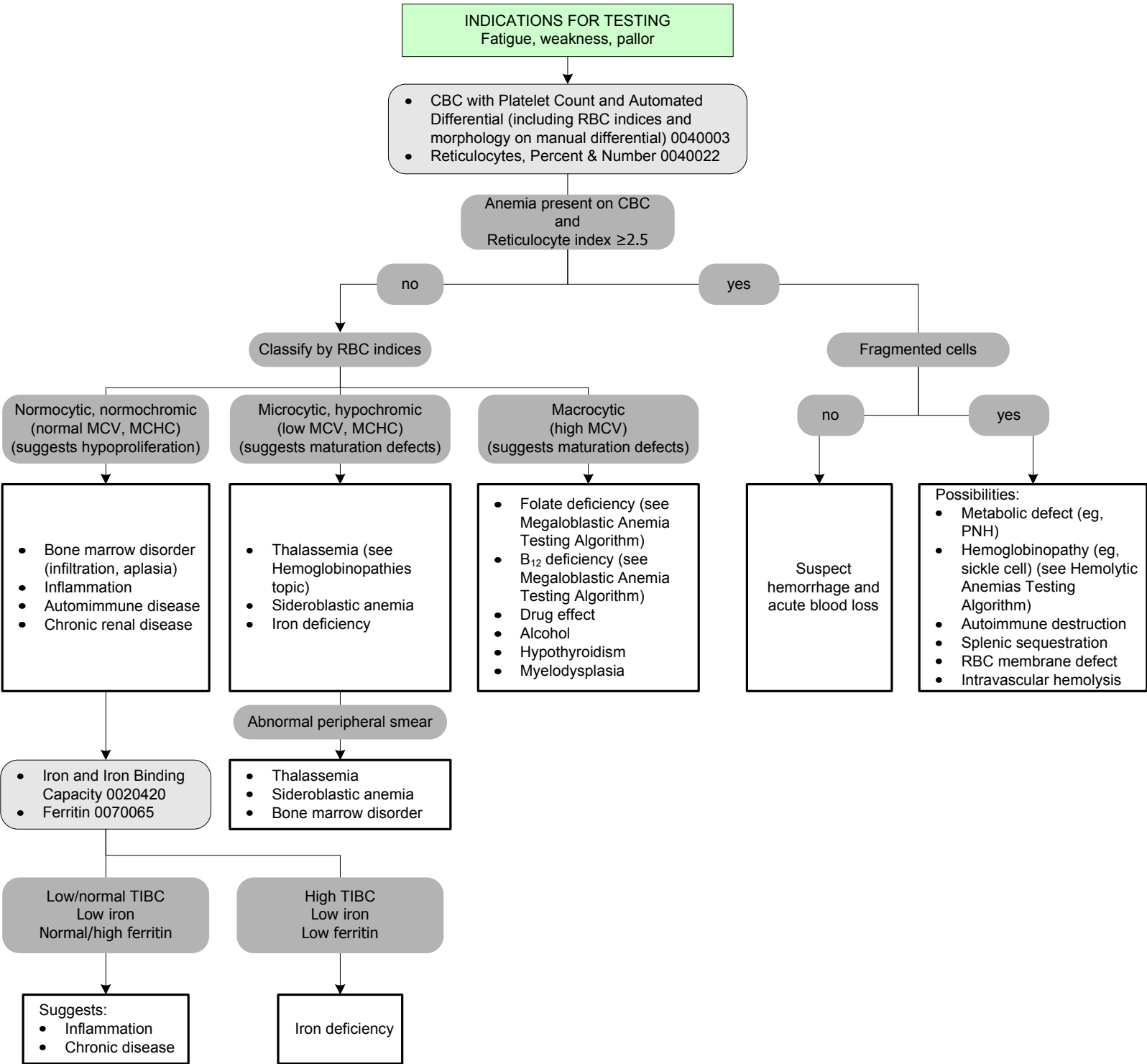


Anemia Testing

[Click here for topics associated with this algorithm](#)



Abbreviations and Formula

MCV = mean cell volume
 MCHC = mean cell hemoglobin concentration
 TIBC = total iron binding capacity

Reticulocyte correction for anemia:

$$\text{ReticCount\%} \times \frac{\text{PT hgb}}{\text{PT Htc}} \times \frac{1}{\text{Maturation time correction (use 2 for most patients)}}$$