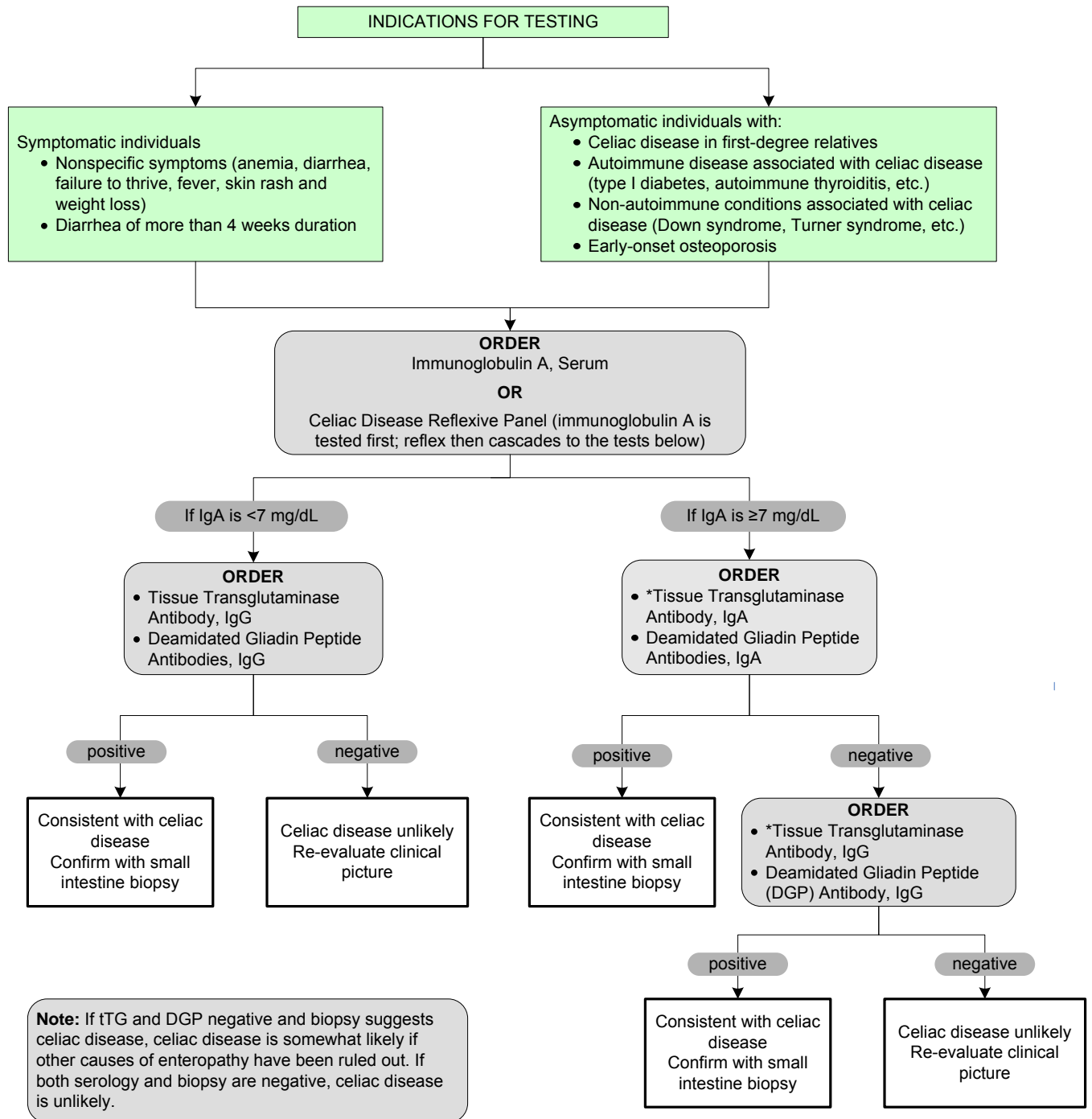


Celiac Disease or Gluten Sensitive Enteropathy Testing

[Click here for topics associated with this algorithm](#)



* Some physicians may ask for endomysial titer by IFA testing. According to the National Institutes of Health Consensus Development statement, IgA-tTG and IgA-EmA tests have equivalent diagnostic accuracy.

NIH Consensus Development Conference on Celiac Disease. NIH Consens State Sci Statements. 2004 Jun 28-30;21(1):1-23.