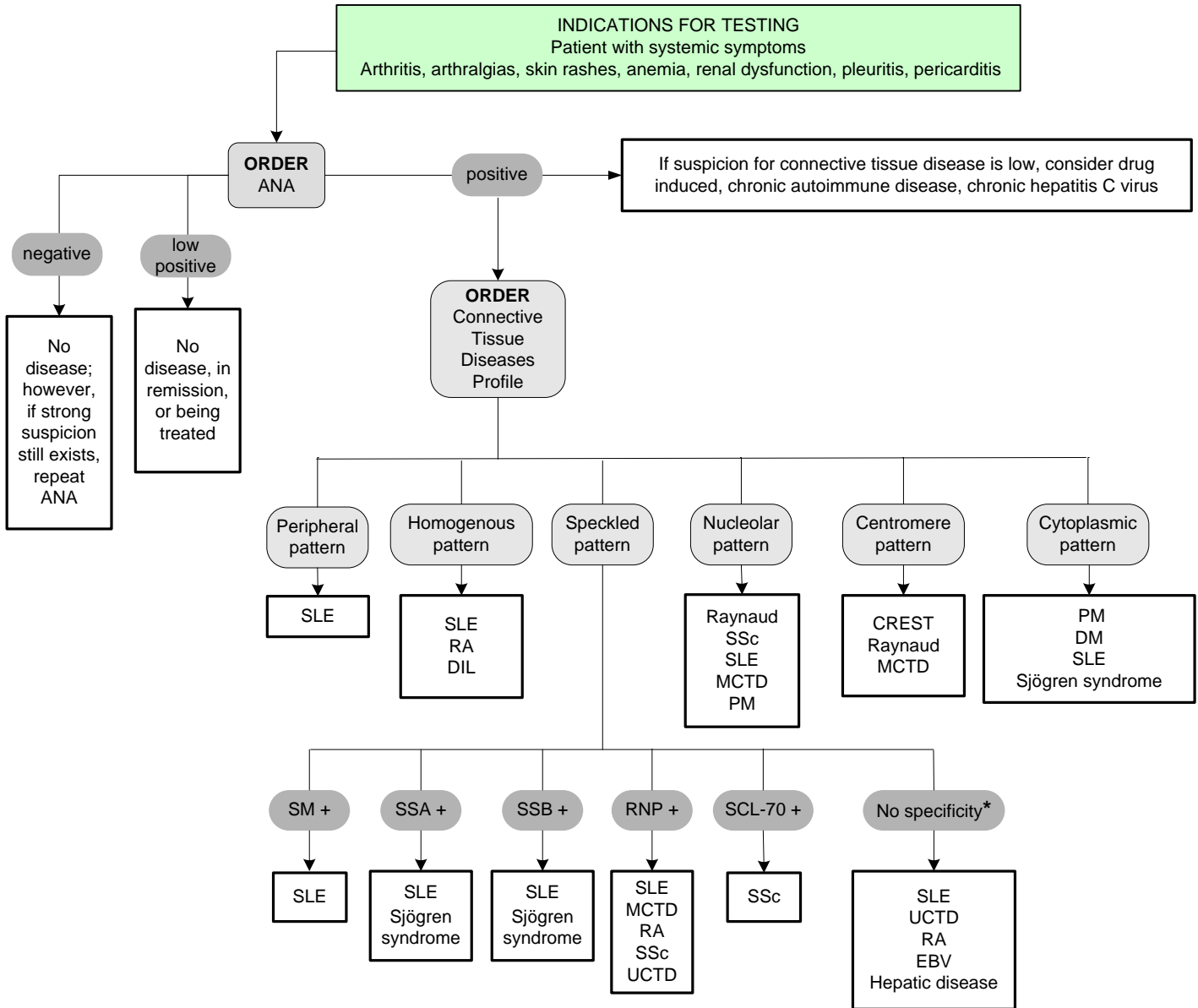


Connective Tissue Disease Testing

[Click here for topics associated with this algorithm](#)



Antibody Key	
ANA	Anti-Nuclear Antibodies (ANA), IgG Screen with Reflex to IFA Titer
RNP	RNP (U1) (Ribonucleic Protein) (ENA) Antibody, IgG
SCL-70	Scleroderma (Scl-70) (ENA) Antibody, IgG
SM	Smith (ENA) Antibody, IgG
SSA	SSA (Ro) (ENA) Antibody, IgG
SSB	SSB (La) (ENA) Antibody
(All of the above sit on Connective Tissue Diseases Profile test panel)	

Disease legend	
CREST	CREST syndrome (calcinosis, Raynaud phenomenon, esophageal dysmotility, sclerodactyly and telangiectasia)
DIL	Drug-induced lupus erythematosus
EBV	Epstein-Barr virus
MCTD	Mixed connective tissue disease
RA	Rheumatoid arthritis
PM	Polymyositis
DM	Dermatomyositis
SLE	Systemic lupus erythematosus
SSc	Scleroderma (systemic scleroderma)
UCTD	Undifferentiated connective tissue disease

*** Unidentified specificities or markers of low prevalence in CTD that are not routinely offered**

Note: Overlap may occur among the antibodies and syndromes.