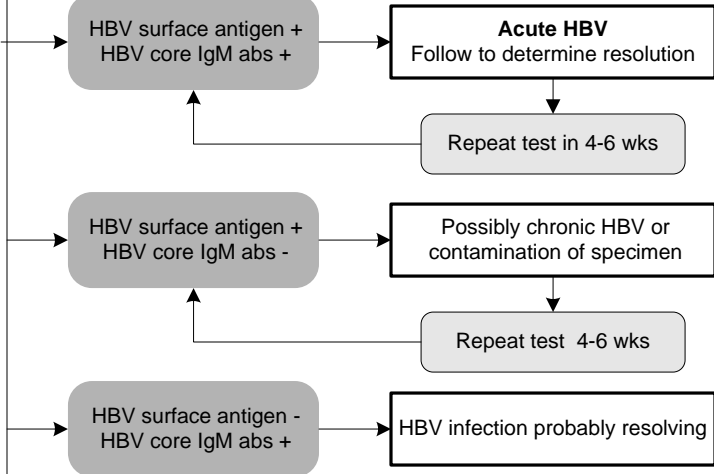


**INDICATIONS FOR TESTING**  
**Acute onset**  
 Jaundice  
 Viral illness

**ORDER**  
**Hepatitis Panel, Acute with Reflex to HBsAg Confirmation (includes the following):**

- Hepatitis A Virus Antibody, IgM
- Hepatitis B Virus Surface Antigen with Reflex to Confirmation
- Hepatitis B Virus Core Antibody, IgM
- Hepatitis C Virus Antibody by CIA



- Consider other etiologies**
- Viral
    - Cytomegalovirus (CMV)
    - Epstein-Barr virus (EBV)
    - Herpes simplex virus (HSV)
    - Varicella-zoster virus (VZV)
    - Hepatitis A, C, D or E
  - Toxin exposure
    - Alcohol
    - Tetrachloride
  - Nonalcoholic acute steatohepatitis (NASH)
  - Drug-induced hepatitis
    - Acetaminophen
    - Antiseizure medications
    - Isoniazid (Nydrazid)
    - Oral contraceptives
    - Rifampin (Rifadin)
    - Sulfonamides
  - Autoimmune disease
    - Systemic lupus erythematosus (SLE)
    - Primary biliary cirrhosis (PBC)
    - Sclerosing cholangitis
    - Autoimmune hepatitis
  - Bacterial infection
    - Leptospirosis
    - Q-fever (*Coxiella burnetii*)
    - Rocky Mountain spotted fever (*Rickettsia rickettsii*)
    - Secondary syphilis (*Treponema pallidum*)
    - Sepsis
    - Typhoid fever (*Rickettsia typhi*)
  - Granulomatous
    - *Mycobacterium tuberculosis* (TB)
    - Sarcoidosis
  - Hereditary
    - Wilson disease
    - Hemochromatosis
    - Alpha-1-antitrypsin deficiency (AAT)
  - Ischemic
  - Parasitic
    - Liver trematodes
    - Toxocariasis

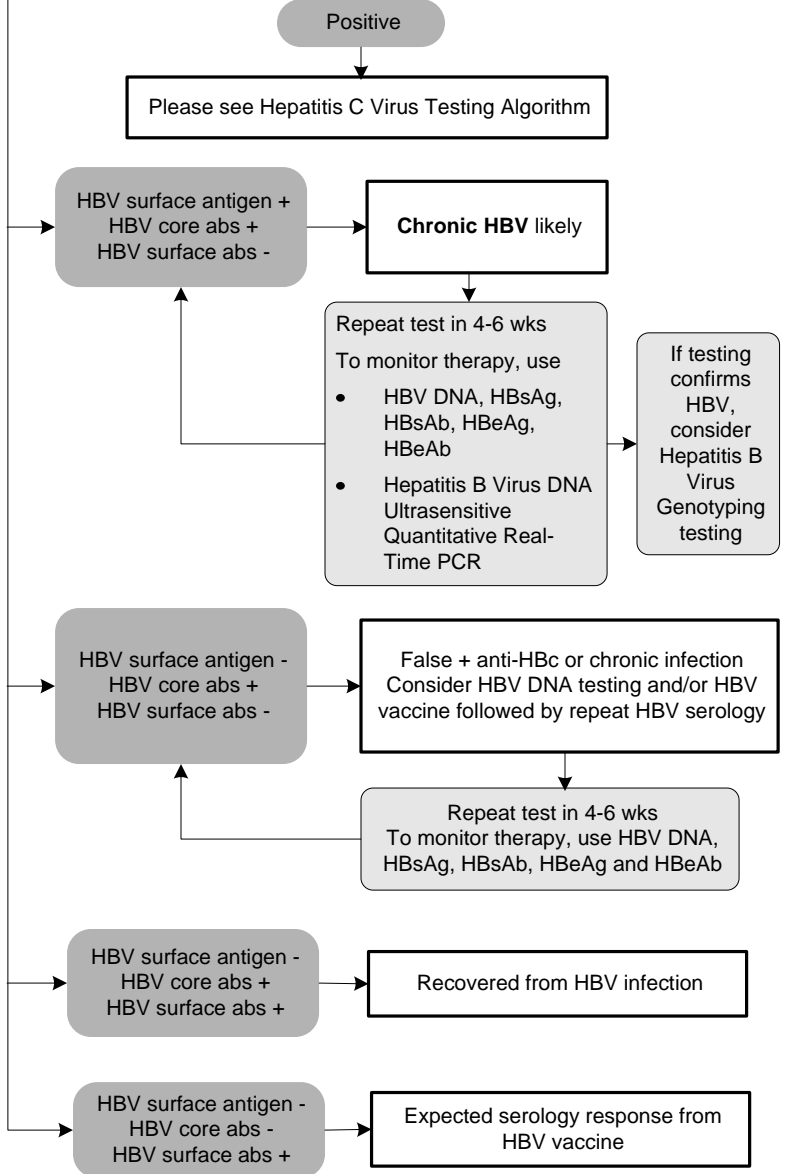
**INDICATIONS FOR TESTING**  
**Chronic**  
 Moderately elevated transaminases  
 (Possible past history of hepatitis)

**ORDER**

- Hepatitis B Virus Surface Antigen with Reflex to Confirmation
- Hepatitis B Virus Core Antibodies (Total)
- Hepatitis B Virus Surface Antibodies

**AND**

Hepatitis C Virus Antibody



- Test Key**
- HBV DNA - Hepatitis B Virus DNA Ultrasensitive Quantitative Real-Time PCR
  - HBeAg – Hepatitis Be Virus Antigen
  - HBeAb – Hepatitis Be Virus Antibody